

PrimeWay Gel Extraction/ PCR Purification II Kit



The **PrimeWay Gel Extraction/ PCR Purification II Kit** is an improved version of our original kit, designed for faster and easier DNA purification. With a ready-to-use silica spin column, DNA can be purified in just 16 minutes with high recovery.

The kit removes unwanted components such as primers, dNTPs, enzymes, salts, and short PCR fragments (< 65 bp), providing DNA that is ready for downstream applications like sequencing, PCR, cloning, and DNA labeling.

Fast

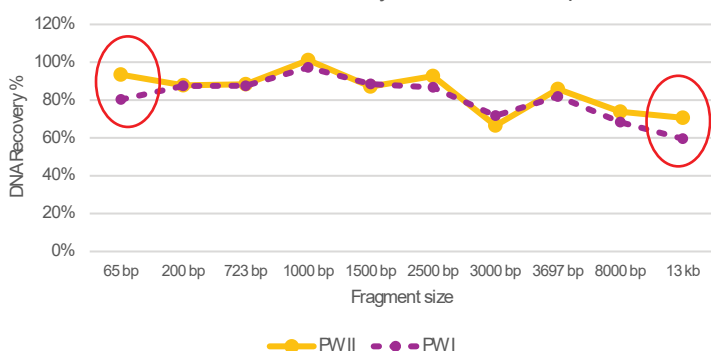
Higher Recovery

Convenience

Efficient

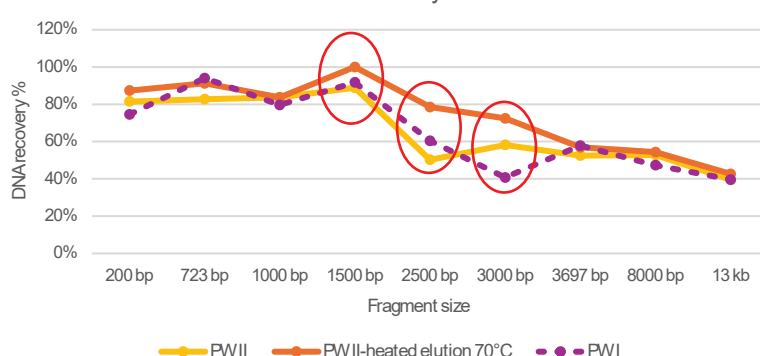
Improvement on PrimeWay Gel Extraction/ PCR Purification II Kit

Overall % of DNA recovery from PCRClean-up



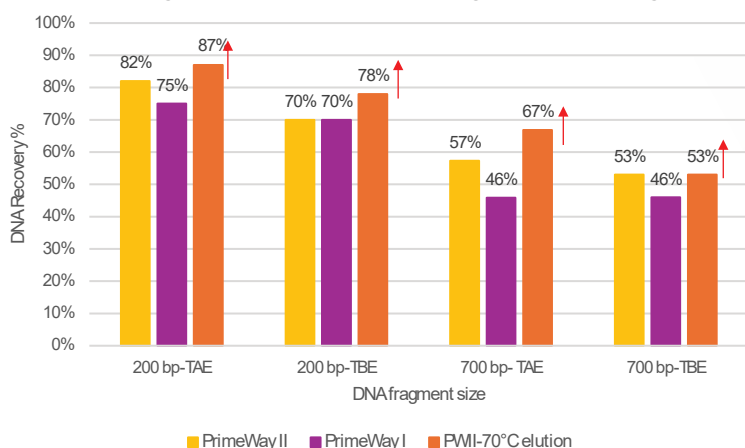
In PCR clean-up, **PrimeWay II** shows around 10% higher recovery at the smallest (65 bp) and largest (13 kb) fragment sizes.

Overall % of DNA recovery from Gel Extraction



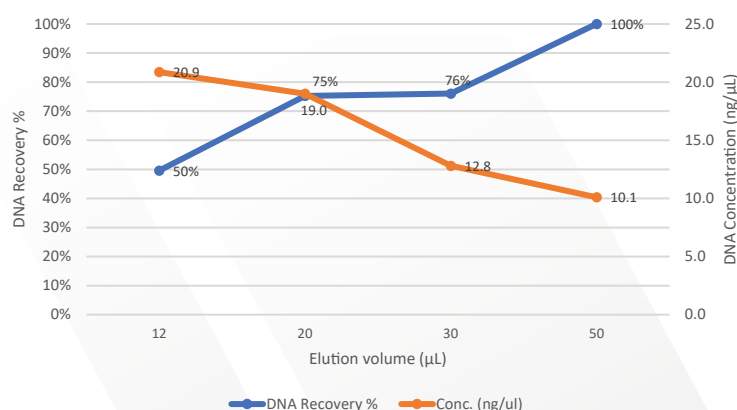
In gel extraction, the **PrimeWay II** with 70°C heated elution demonstrates consistently higher DNA recovery compared to the previous **PrimeWay I** kit across nearly the entire fragment size range. The improvement is most notable for mid-sized fragments (1.5 to 3 kb), while even smaller fragments (~200 bp) show an additional 10 to 29% increase in yield.

Percentage of DNA recovered from 200 mg of 2% TAE vs TBE gel



PrimeWay II consistently delivers matching or higher DNA recovery than the **PrimeWay I** kit across both TAE (Tris-Acetate-EDTA) and TBE (Tris-Borate-EDTA) gels. Recovery is further enhanced when using 70°C heated elution with **PrimeWay II**.

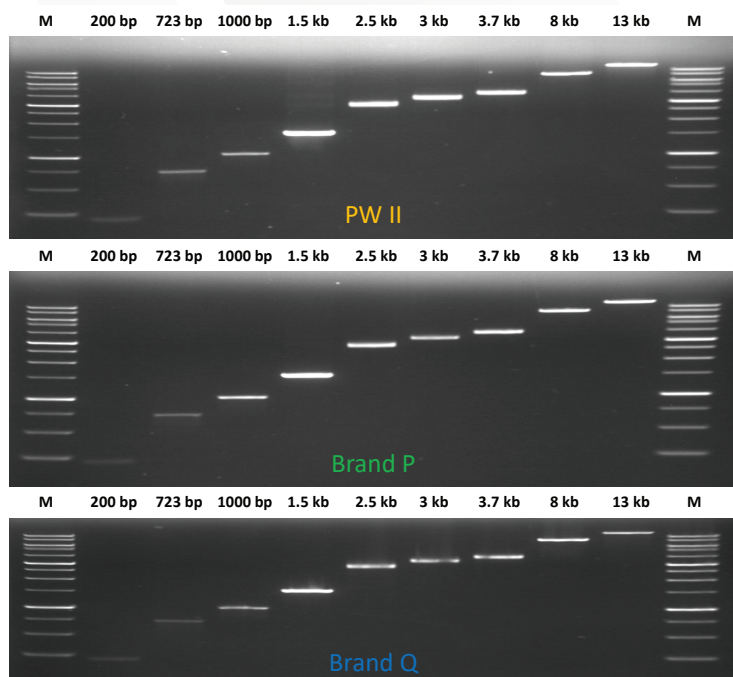
PrimeWay II percentage of DNA recovery and concentration in different elution volume



PCR product with fragment size of 723 bp was directly purified using PCR clean up protocol in triplicate and quantified by spectrophotometer. At smallest elution volume of 12μL, the DNA concentration ~20ng/μL, with approximately 50% of total DNA recovery maintained.

Gel Extraction

Removal of Contaminants

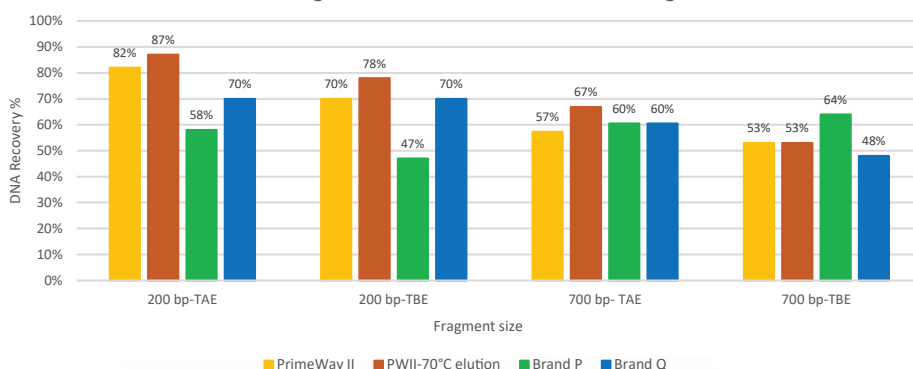


PCR products (200 bp, 723 bp, 1 kb, 1.5 kb) and restriction-digested plasmid fragments (2.5 kb, 3 kb, 3.7 kb, 8 kb, 13 kb) were efficiently recovered from TAE agarose gels using the **PrimeWay Gel Extraction/PCR Purification II Kit (KIT-9051)**. Analysis on a 1% TAE gel with Floro+Red Nucleic Acid Stain (BIO-5171-600µl) confirms sharp, clear bands across all sizes. The results are **comparable with the leading brand**.

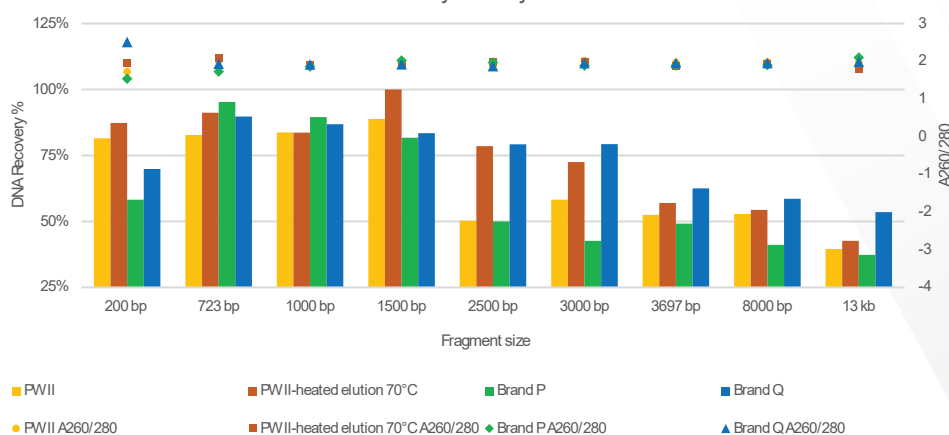
Yield Recovery

DNA yield recovery performance from **PrimeWay II** enhanced Gel Extraction Protocol compared to competitor brand across both TAE (Tris-Acetate-EDTA) and TBE (Tris-Borate-EDTA) gels. **PrimeWay II** pre-heated elution buffer at 70°C, consistently matches or outperforms major brands across TAE & TBE systems.

Percentage of DNA recovered from 200 mg 2% TAE vs TBE



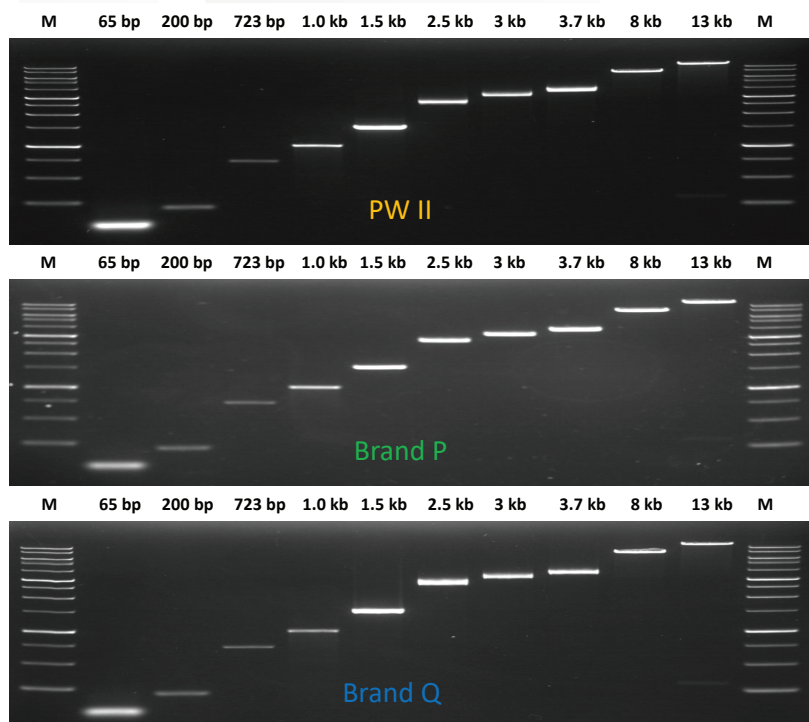
DNA Yield Recovery & Purity – Gel Extraction



Experience superior DNA recovery and purity with the enhanced Gel Extraction Protocol. Utilizing a **pre-heated elution buffer at 70°C**, **PrimeWay II** matches the performance of the standard **Brand Q** and significantly outperforms room-temperature elution **across medium and large DNA fragments**. At room temperature, it offers recovery akin to **Brand P**, with the added benefit of enhanced recovery at 70 °C for all fragment sizes.

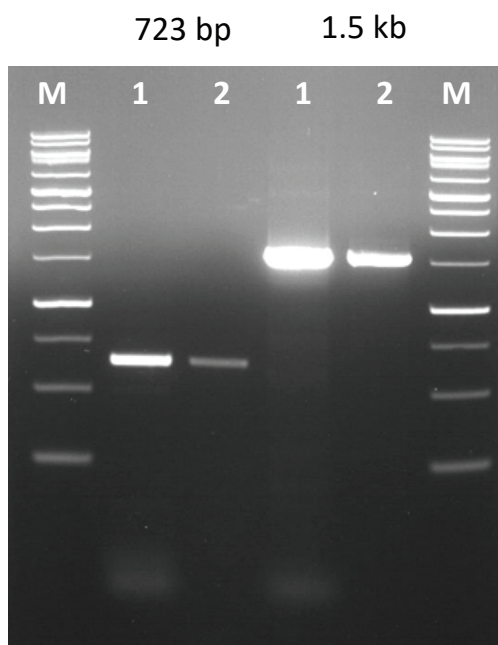
PCR Purification

Removal of Contaminants



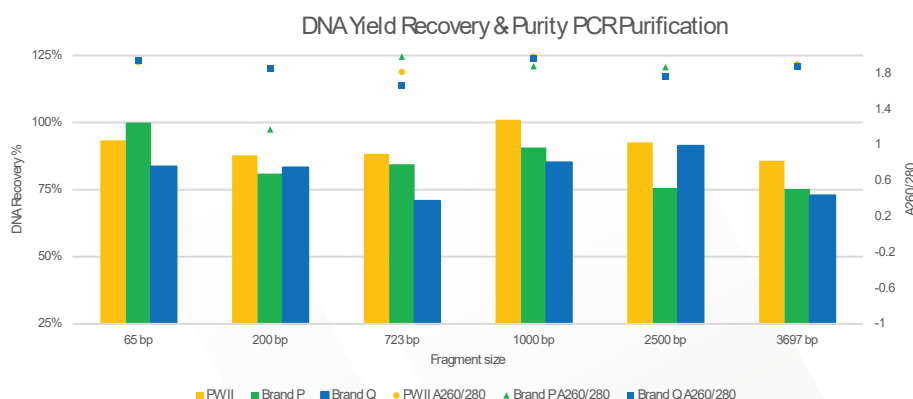
Purified PCR products (65 bp, 200 bp, 723 bp, 1 kb, 1.5 kb) and restriction-digested plasmid fragments (2.5 kb, 3 kb, 3.7 kb, 8 kb, 13 kb) were efficiently recovered from TAE agarose gels using the **PrimeWay Gel Extraction/ PCR Purification II Kit (KIT-9051)**. Analysis on a 1% TAE gel with Floro+Red Nucleic Acid Stain (BIO-5171-600µl) confirms sharp, clear bands across all sizes. The results are comparable with the leading brand.

Removal of Primer Dimer



PCR amplicons of 723 bp and 1.5 kb were purified using the **PrimeWay Gel Extraction/ PCR Purification II Kit (KIT-9051)**. For quality assessment, 1 µL of unpurified PCR product (lane 1) and purified PCR product (lane 2) were analyzed on a 1% TAE agarose gel stained with Floro+Red Nucleic Acid Stain (BIO-5171-600µL). The gel confirmed that the purified PCR products were of the expected sizes and free from detectable contaminants, making them suitable for downstream applications.

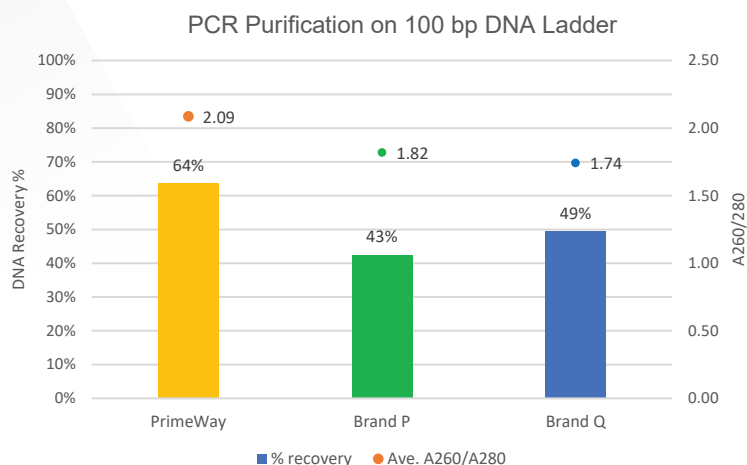
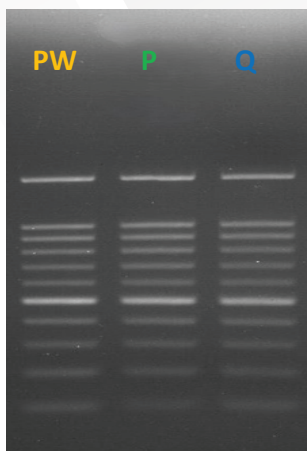
Up to 100% Yield



PrimeWay II delivers DNA yield and purity on par with **Brand Q** and **Brand P**, ensuring maximum recovery and reliability for your downstream applications.

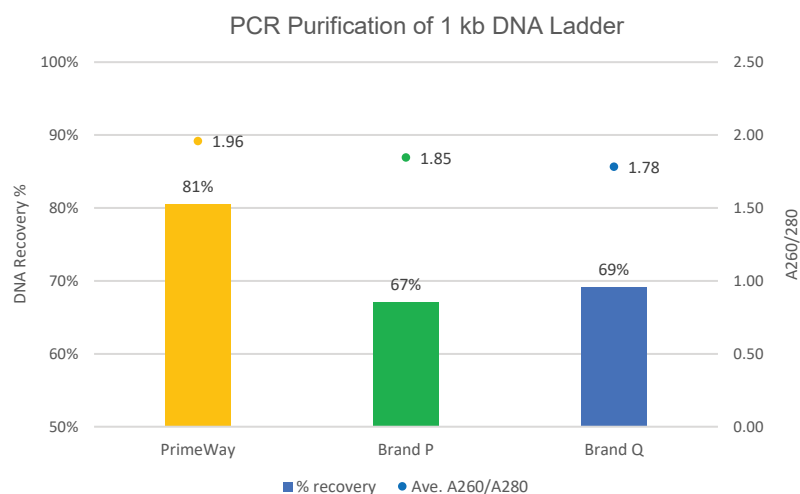
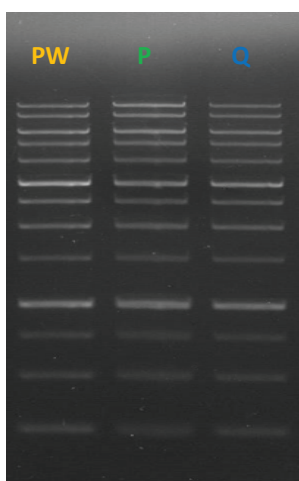
Yield & Purity

100 bp Ladder



10 μ L of the 100 bp DNA Ladder (1st BASE, BIO-5130-50ug) was purified using various PCR Purification kits. DNA was eluted in 50 μ L of Elution Buffer, and 1 μ L of the purified product was analyzed on a 1.7% TAE gel stained with Floro+Red Nucleic Acid Stain (BIO-5171-600ul). The results highlight the recovery performance of PrimeWay II is higher as compared to the Brand P and Brand Q.

1 kb Ladder



10 μ L of the 1 kb DNA Ladder (1st BASE, BIO-5130-50ug) was purified using various PCR Purification kits. DNA was eluted in 50 μ L of Elution Buffer, and 1 μ L of the purified product was analyzed on a 1.7% TAE gel stained with Floro+Red Nucleic Acid Stain (BIO-5171-600ul). The results highlight the recovery performance of PrimeWay II is higher as compared to the Brand P and Brand Q.

Product Code	KIT-9051-10/50/250
Sample Type	Unpurified PCR product
DNA Size	65 bp to 15 kb
Binding Capacity	20 μ g
Recovery	Up to 100%
Elution	30 to 50 μ L
Duration	Gel Extraction ~16 minutes; PCR Purification ~6 minutes
Packaging Size	10, 50, 250 Preps



Scan QR Code for
More Details