

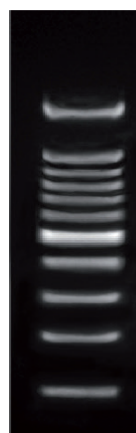
ExactMark 100bp DNA Ladder (100-1,500 bp), Ready to Use

Cat. No.: BIO-5130-2.5ug
BIO-5130-50ug
BIO-5130-100ug

Concentration: 0.1ug/ul

Supplied with: -

Storage: 25°C – 6 months
-20°C – 24 months



bp DNA Mass
(ng/5μl)

1,500	72.5
1,000	50
900	40
800	40
700	27.5
600	30
500	85
400	40
300	35
200	40
100	40

Gel running conditions:

1.7% Agarose gel
(C/No: BIO-1000)
0.5μg/lane, 10cm gel,
1X TAE (C/No:BUF-3000/BUF-3001),
8V/cm, 45 mins

DESCRIPTION

Used for sizing and approximate quantification of wide range double-stranded DNA on agarose gel. The ladder is composed of eleven individual DNA fragments (in base pairs): 1500, 1000, 900, 800, 700, 600, 500, 400, 300, 200 and 100. It contains two reference bands of 1500 and 500bp for easy orientation. Orange G and xylene cyanol FF are used as tracking dyes.

Storage Buffer

10mM Tris-HCl (pH 8.0)
1mM EDTA

Quality Control Assay Data

Well-defined bands are formed upon running of agarose gel electrophoresis. The DNA concentration is determined with spectrophotometry. The absence of nucleases is confirmed direct nuclease activity assay.

Protocol for Loading

Load 5ul of the solution into a 5mm wide agarose gel lane.

It is recommended to load 0.1ug (1ul) of DNA ladder per 1mm width of gel lane.

Recommendations

- Do not heat solution prior to loading.
- Mix 1 part of dye solution with 5 parts of DNA sample.
- Load equivalent amount of DNA sample and ladder.
- Adjust sample concentration to be approximately equal to the amount of DNA in the nearest band of the ladder for quantification purpose.
- Visualize DNA by staining with FloroSafe DNA stain (Cat No. BIO-5170-1ml).