

Unpacking

What You Need For
Your Everyday PCR

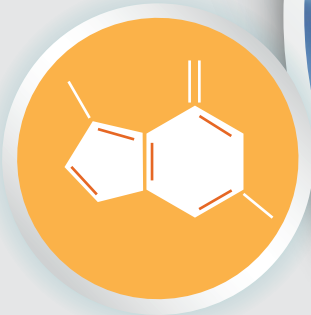


PCR

DNA Samples



Polymerase



dNTPs



Buffers



Service

PCR

PCR (polymerase chain reaction) is an invaluable tool for molecular biology research. It is used in laboratories around the world in a wide array of applications such as cloning, gene expression analysis, genotyping, sequencing, and mutagenesis.

Everyday PCR Made Simple

Our REDiant II PCR Mastermix and exTEN II PCR Mastermix are formulated with density reagents and inert tracking dyes to enable easy visual control during PCR set-up and direct loading of the reaction product into the gel. Achieve robust amplification with minimal optimization of reaction conditions with an added convenience and minimal pipetting and handling errors.

Product	Taq II PCR Mastermix (2X)	REDiant II PCR Mastermix (2X)	exTEN II PCR Mastermix (2X)
Amplicon Size	6kb	6kb	10kb
End Product	Sticky ends	Sticky ends	Mix of Sticky & Blunt ends
Direct Loading to Gel	No	Yes, contains density reagent and red inert tracking dye which migrates at the same rate as 1kb DNA fragment in a 1% agarose gel	Yes, contains density reagent and two tracking dyes which migrates at the same rate as 4kb and 50bp DNA fragment in a 1% agarose gel
Product No	BIO-5181-200 (200rxn)	BIO-5187-200 (200rxn)	BIO-5188-200 (200rxn)
	BIO-5181-1000 (1000rxn)	BIO-5187-1000 (1000rxn)	BIO-5188-1000 (1000rxn)
Stand-alone Enzyme	BIO-5111-500U	BIO-5116-500U	
	BIO-5111-2500U	BIO-5116-2500U	

Ultra-Pure Nucleotides

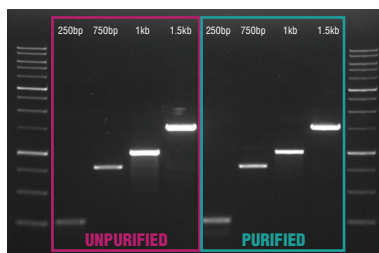
High quality dNTPs are a vital requirement for successful PCR. Get optimum performance with our high quality, ultra-pure dNTPs.

Isolate DNA with Confidence

Achieve maximum efficiency and performance with PrimeWay Extraction Kits.

High Yield

Ensures dependable data with excellent yield.



DNA yield of PCR product using 1st BASE PrimeWay Gel Extraction/Purification Kit.

Purity Consistency

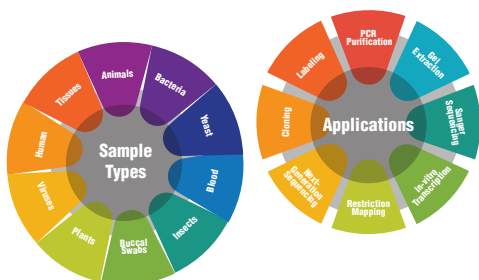
Purity ratio of DNA remains consistent within the acceptable range in multiple samplings.



DNA purity assessment from different sample matrices using 1st BASE PrimeWay Plasmid DNA Extraction Kit.

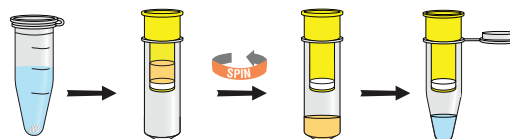
Versatility

Every PrimeWay extraction kit is able to accommodate to an extensive range of sample types and applications.



Convenience

Simple and straight-forward procedure that saves time and eliminates manual processing steps.



Easy-to-follow 1st BASE PrimeWay spin column purification method.

Find the Right Extraction Kits for Your Research Needs

base-asia.com/nucleic-acid-extraction

PrimeWay Extraction Kits	Viral DNA/RNA	Total RNA	Genomic II DNA	Plant DNA	Plasmid DNA	Gel Extraction/PCR Purification	Soil DNA	Stool DNA
Product No	KIT-9010	KIT-9021	KIT-9022	KIT-9030	KIT-9040	KIT-9050	KIT-9060	KIT-9070
Size	10/50/250 preps	10/50/250 preps	10/50/250 preps	10/50/250 preps	10/50/250 preps	10/50/250 preps	10/50/250 preps	10/50 preps
Sample Type	Serum Plasma Body Fluids Cell Culture Supernatant Viral Transport Medium Swabs	Animal Tissue Bacteria Cultured Cells White Blood Spots Yeast Insects Plant	Animal Tissue, Cultured Cells, Mouse/Rat Tail, Bacteria, Yeast, Fungi from Cut Agar, Whole Blood/Bufly Coat, Nucleated Blood, Dried Blood Spot, White Blood Cells, Insect, Buccal Swab, Saliva, Alcohol-Fixed Tissue, Sperm, Feather/Nails/Hair	Various Types of Plants	Bacteria Culture	Gel/ PCR mixture	Soil Manure Water Sample	Animal & Human Stool Gut Content
Yield/ Recovery	<1 µg	up to 70 µg	up to 40 µg	1 - 30 µg	Up to 40 µg	Up to 95%	100 µg	Up to 50 µg
Purity	-	2.0 - 2.3	1.7 - 2.0	1.7 - 2.0	1.7 - 2.0	1.7 - 2.0	1.7 - 2.0	1.7 - 2.0
Duration	30 mins	<60 mins	~25 mins/prep*	30 mins	25 mins	Gel Extraction: 20 mins PCR Purification: 10 mins	<60 mins	≤60 mins

DNA Electrophoresis

Ensuing PCR, gel electrophoresis is commonly performed as an analytical procedure. Gel electrophoretic methods have also been used as a preparative technique before blotting, cloning, DNA sequencing, and other various downstream applications.



High Quality Agarose

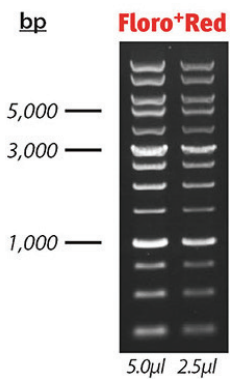
A low EEO agarose with high electrophoresis mobility well suited for nucleic acid and protein analytical, preparative electrophoresis and blotting.



Ready-to-use Running Buffers

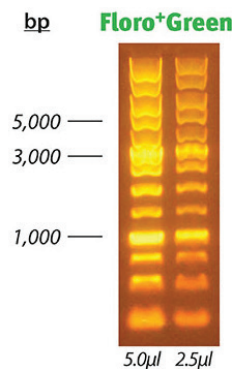
Choose from our range of TAE and TBE buffers available at different concentration. We also supply a comprehensive selection of various other buffer in convenient packaging and varying grade.

Light Up Your Gels with 1st BASE DNA Stains



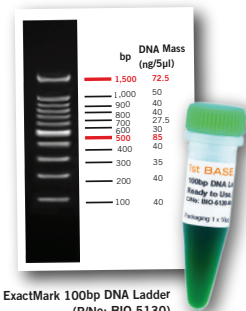
Product Series: BIO-5171

- ✓ **Excellent Sensitivity**
Achieve bright, clear and defined bands across different fragment sizes
- ✓ **Flexible Use**
 - Applicable to: dsDNA, ssDNA and RNA
 - Precast or post-gel staining protocols
 - Agarose and polyacrylamide gels
- ✓ **Safe For You**
Non-mutagenic and non-cytotoxic as shown by Ames and Cell Staining Tests
- ✓ **Easy Disposal**
Environmentally-friendly. Dispose as regular trash or down the drain**
Institutional regulations may vary.



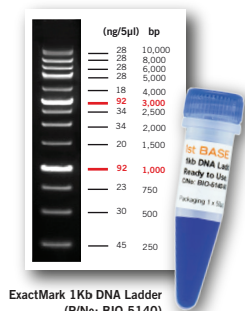
Product Series: BIO-5172

Mark Your Gels with 1st BASE ExactMark DNA Ladders



ExactMark 100bp DNA Ladder
(P/No: BIO-5130)

- ✓ **Reliable & Precise**
- ✓ **Ready to Load**
- ✓ **Room Temp Stability**
(up to 6 months)



ExactMark 1Kb DNA Ladder
(P/No: BIO-5140)

Verify the Sequence

Be assured that your DNA template for Sanger sequencing is in good hands. We work hard to make sure we continuously meet or exceed leading industry providers in terms of quality value (QV), trace score and contiguous read length (CRL). Our experienced team ensures quality results even with difficult templates, and provide prompt troubleshooting assistance.



Custom Solutions & OEM Services

Besides our off-the-shelf PCR reagents supply, we offer customizable manufacturing solutions for clients developing molecular assays.

Quality Management

Assurance of our quality standards with our **ISO 13485: 2016** and **cGMP standards**.

Clean Room

1st BASE facility offers ISO clean room capabilities for customers who need their product parts processed in a clean, controlled environment. Operational capacity of more than 1300sqm and 4 separate ISO 7 cleanrooms of over 270sqm.

We have an experienced team in OEM product development, formulation, aseptic processing, kit assembly and packaging. Our proficiency in the handling of many product types brings you a complete turnkey solution for your custom kitting, packaging and labelling needs.

Contact Us Today!

SINGAPORE ☎ +65-67757318 ✉ custcare@axilscientific.com 🌐 www.axilscientific.com
MALAYSIA ☎ +603-89433252 ✉ custcare@apicalscientific.com 🌐 www.apicalscientific.com

To contact your local distributors, visit base-asia.com/contact/#global

