

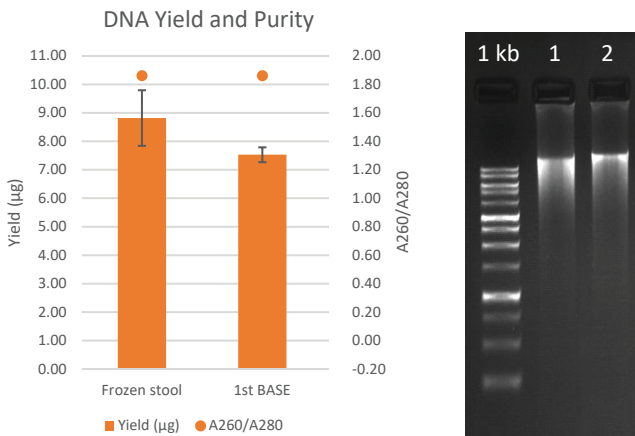
# Stool DNA Collection Kit, 10mL

Stool DNA Collection Kit is designed for collecting, preserving, and storing stool samples for DNA extraction. It contains a non-lysis solution to ensure the stability of sample. The collected samples can be stored at room temperature for at least two years.

- Stool sample can be stored at room temperature for at least 2 years.
- Preserve host & microorganism DNA.
- Contain steel bead to break stool into suspension.



## Performance



<b>Product Code</b>	K.BUF-9107-10ml
<b>Sample Type</b>	Solid stool
<b>Stabilisation Solution Volume</b>	10 ml
<b>Beads</b>	2 steel beads
<b>Stool input</b>	Up to 2.5g
<b>Application</b>	DNA extraction
<b>Storage Temperature with Stool Sample</b>	Room temperature: 2 years -20 °C & -80 °C : Long-term

Figure 1: 100 ng of extracted DNA are analysed on agarose gel  
1: Frozen stool, without preservation solution.  
2: Stool stored with 1st BASE Stool DNA Collection Kit.

DNA isolated from 200 mg human stool, with and without preservation solution.

## Comparison of 16S Microbial Profiles 1st BASE Stool DNA Collection Kit Vs Other brand

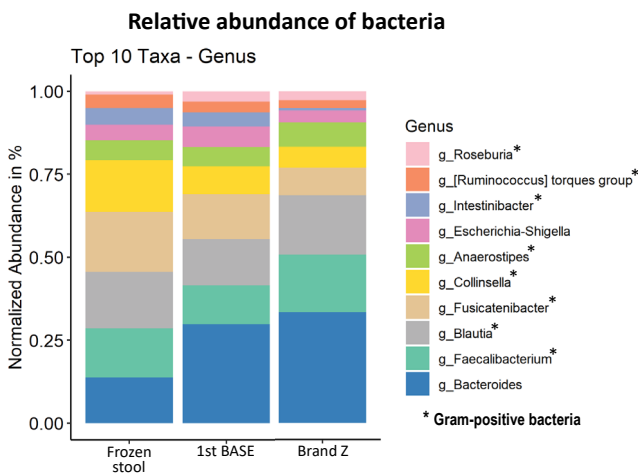


Figure 2: Comparison of 16S microbial profiles from preserved human stool sample, the DNA extracted using PrimeWay Stool DNA extraction kits. V4 region was amplified from the extracted DNA and sequenced on the Illumina "Miseq" Platform. Qiime2 pipeline was used to analyse the data and the results are shown in the figure above. The top 10 relative abundance of bacteria is classified in genus-level.

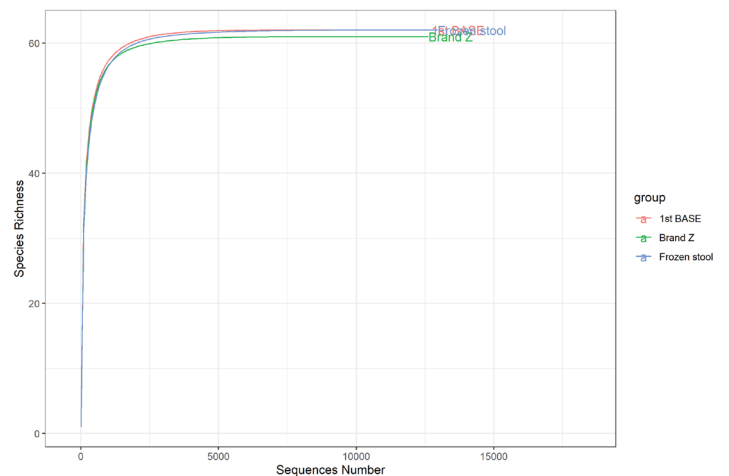


Figure 3: The alpha diversity is presented using rarefaction curves. Rarefaction curves is used to provides insight on the number of species detected at the given sequencing depth.



Scan QR Code for Protocol