

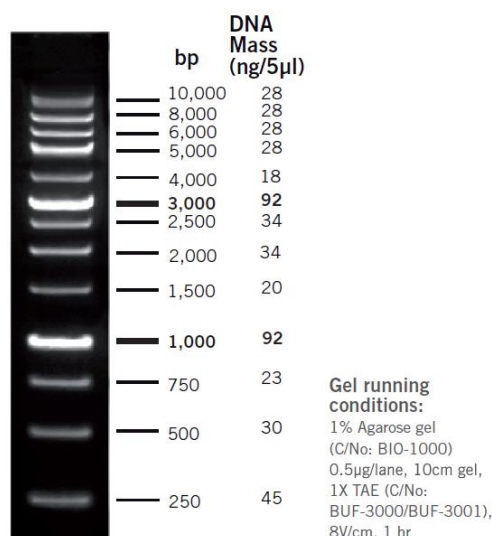
ExactMark 1kp DNA Ladder (250-10,000 bp), Ready to Use

Cat. No.: BIO-5140-2.5ug
 BIO-5140-50ug
 BIO-5140-100ug
 BIO-5140-250ug

Concentration: 0.1ug/ul

Supplied with: -

Storage: 25°C – 6 months
 -20°C – 24 months



DESCRIPTION

Used for sizing and approximate quantification of wide range double-stranded DNA on agarose gel. The ladder is composed of thirteen individual DNA fragments (in base pairs): 10000, 8000, 6000, 5000, 4000, 3000, 2500, 2000, 1500, 1000, 750, 500 and 250. It contains two reference bands of 3000 and 1000bp for easy orientation. Uses Bromophenol blue and Xylene cyanol FF as tracking dyes.

Storage Buffer

10mM Tris-HCl (pH 8.0)
 1mM EDTA

Quality Control Assay Data

Well-defined bands are formed upon running of agarose gel electrophoresis. The DNA concentration is determined with spectrophotometry. The absence of nucleases is confirmed by a direct nuclease activity assay.

Protocol for Loading

Load 5ul of the solution into a 5mm wide agarose gel lane.

It is recommended to load 0.1ug (1ul) of DNA ladder per 1mm width of gel lane.

Recommendations

- Do not heat solution prior to loading.
- Mix 1 part of dye solution with 5 parts of DNA sample.
- Load equivalent amount of DNA sample and ladder.
- Adjust sample concentration to be approximately equal to the amount of DNA in the nearest band of the ladder for quantification purpose.
- Visualize DNA by staining with FloroSafe DNA stain (Cat No. BIO-5170-1ml).