

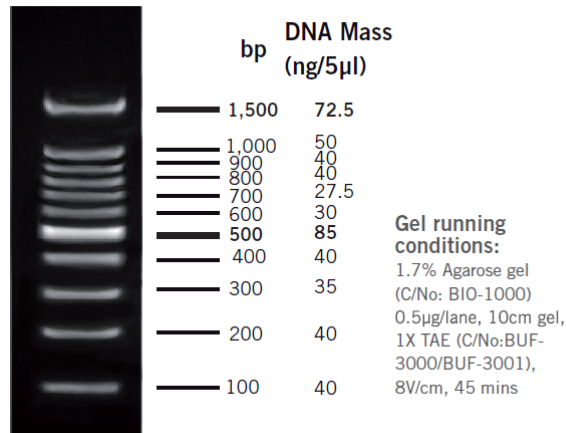
## ExactMark 100bp DNA Ladder (100-1,500 bp), Ready to Use

**Cat. No.:** BIO-5130-2.5ug  
BIO-5130-50ug  
BIO-5130-100ug

**Concentration:** 0.1ug/ul

**Supplied with:** -

**Storage:** 25°C – 6 months  
-20°C – 24 months



### DESCRIPTION

Used for sizing and approximate quantification of wide range double-stranded DNA on agarose gel. The ladder is composed of eleven individual DNA fragments (in base pairs): 1500, 1000, 900, 800, 700, 600, 500, 400, 300, 200 and 100. It contains two reference bands of 1500 and 500bp for easy orientation. Orange G and xylene cyanol FF are used as tracking dyes.

### Storage Buffer

10mM Tris-HCl (pH 8.0)  
1mM EDTA

### Quality Control Assay Data

Well-defined bands are formed upon running of agarose gel electrophoresis. The DNA concentration is determined with spectrophotometry. The absence of nucleases is confirmed direct nuclease activity assay.

### Protocol for Loading

Load 5ul of the solution into a 5mm wide agarose gel lane.

It is recommended to load 0.1ug (1ul) of DNA ladder per 1mm width of gel lane.

## Recommendations

- Do not heat solution prior to loading.
- Mix 1 part of dye solution with 5 parts of DNA sample.
- Load equivalent amount of DNA sample and ladder.
- Adjust sample concentration to be approximately equal to the amount of DNA in the nearest band of the ladder for quantification purpose.
- Visualize DNA by staining with FloroSafe DNA stain (Cat No. BIO-5170-1ml).