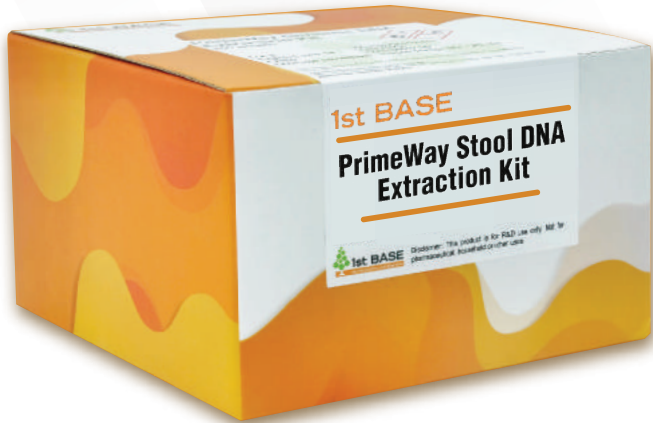




1st BASE

YOUR RESEARCH, OUR BUSINESS



PrimeWay Stool DNA Extraction Kit

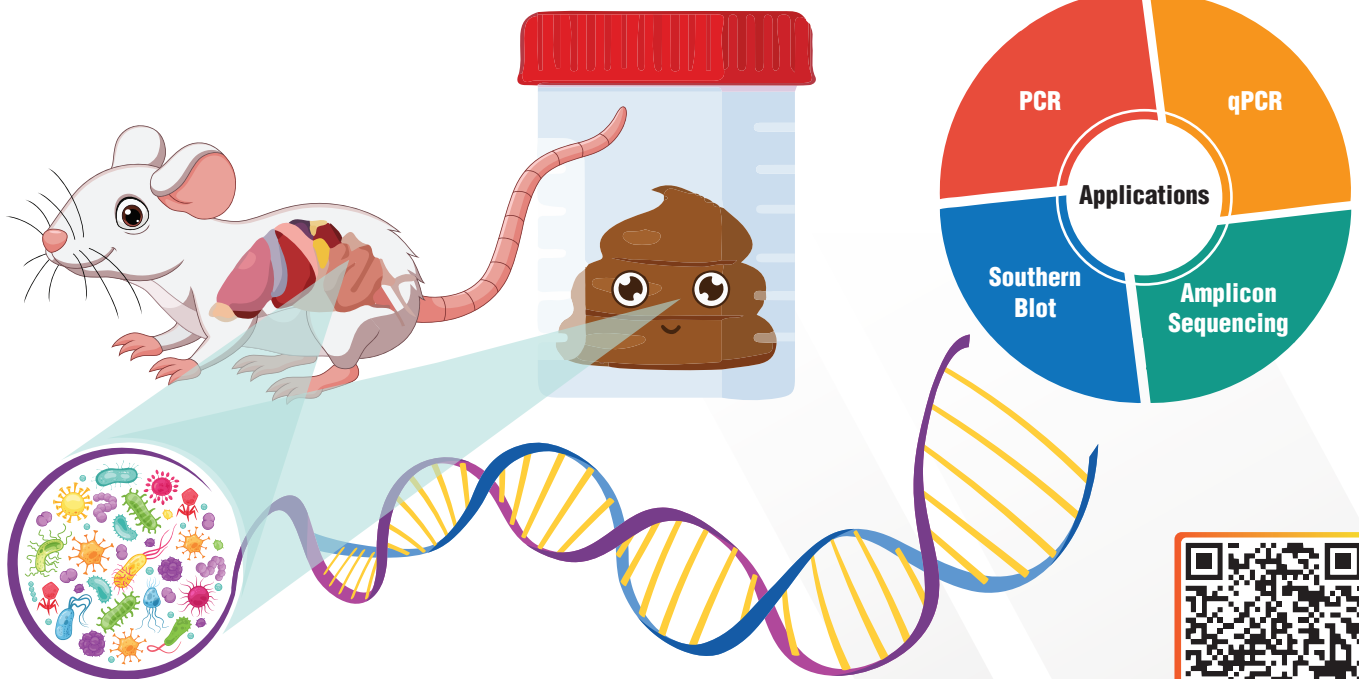
(KIT-9070-10/50)

The **PrimeWay Stool DNA Extraction Kit** is a robust and reliable kit designed to isolate genomic DNA from both animal and human stool samples as well as gut content. This kit is meticulously optimised to handle a broad spectrum of stool types such as normal, dry, hard & high-fibre animal stool.

Ceramic beads coupled with homogenisation duration is perfected in this kit to maximise the lysis of the microorganism. The extracted DNA is **free from PCR inhibitors**, making it suitable for downstream application such as PCR, amplicon sequencing, qPCR, Southern blot, etc. Additionally, the kit has been **validated for use with Next Generation Sequencing (NGS) platforms** for human stool samples.

Versatility

Proficient in managing both human and animal stool samples, as well as gut content, and adaptable for various downstream applications.



Scan QR Code for
More Details

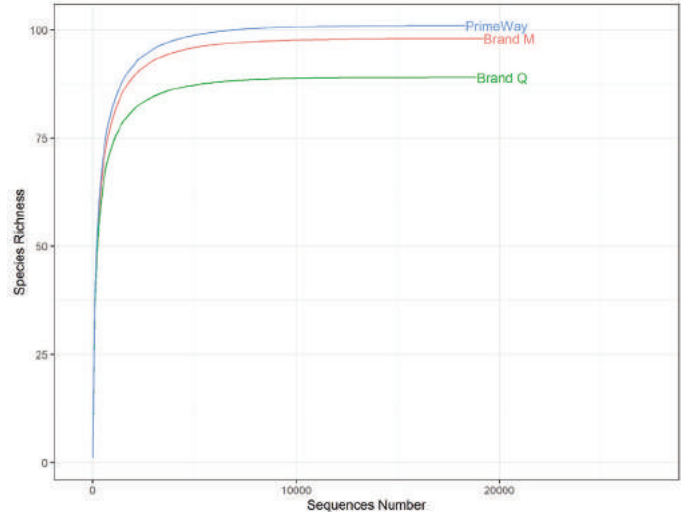
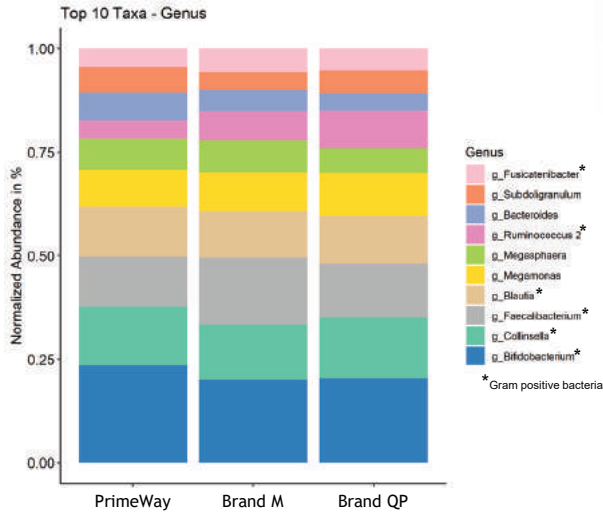


1st BASE

YOUR RESEARCH, OUR BUSINESS

Comparison of 16S Microbial Profiles

Relative Abundance of Bacteria

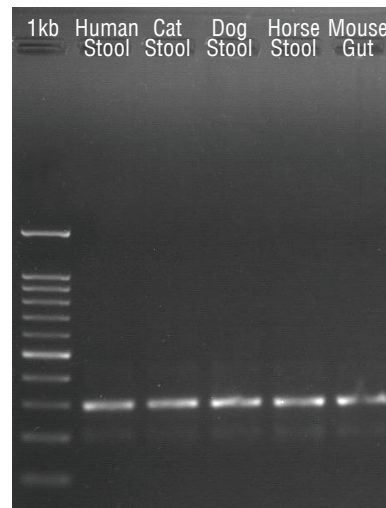
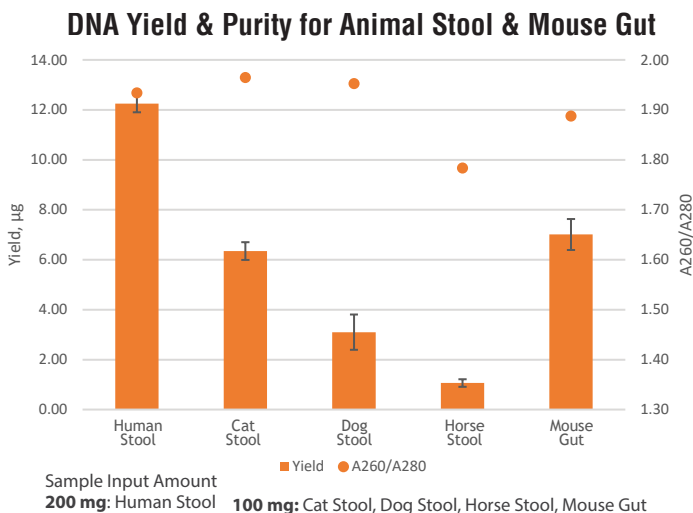


Comparison of the 16S microbial profiles from human stool samples extracted using stool DNA extraction kits (PrimeWay and other manufacturers). From the isolated DNA, the V4 region was amplified and sequenced using the Illumina Miseq Platform. The data was analysed using the Qiime2 pipeline, and the results are displayed in the above figure. Bacteria's relative abundance is categorised down to the genus level.

The alpha diversity is presented using rarefaction curves. Rarefaction curves is used to provide insights on the number of species detected at the given sequencing depth.

High Purity DNA

Free from PCR Inhibitors



Successful PCR amplification (16S V4) indicates extracted DNA is free from PCR inhibitors. 1 µL PCR product is analysed with 1% agarose gel.

1st BASE PrimeWay Stool DNA Extraction Kit

Product Code	KIT-9070-10/50
Sample Type	Animal & Human Stool, Gut Content
Binding Capacity	Up to 50 µg
Purity (A260/A280)	1.7 - 2.0
Duration	≤ 60 minutes
Packaging Size	10, 50 Preps

