



1st BASE

YOUR RESEARCH, OUR BUSINESS

Unpacking

What You Need For
Your Everyday PCR

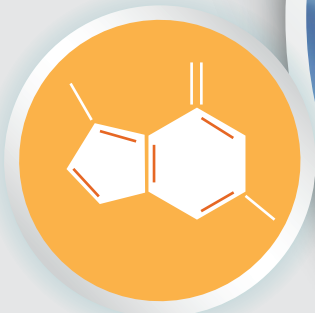


PCR

DNA Samples



Polymerase



dNTPs

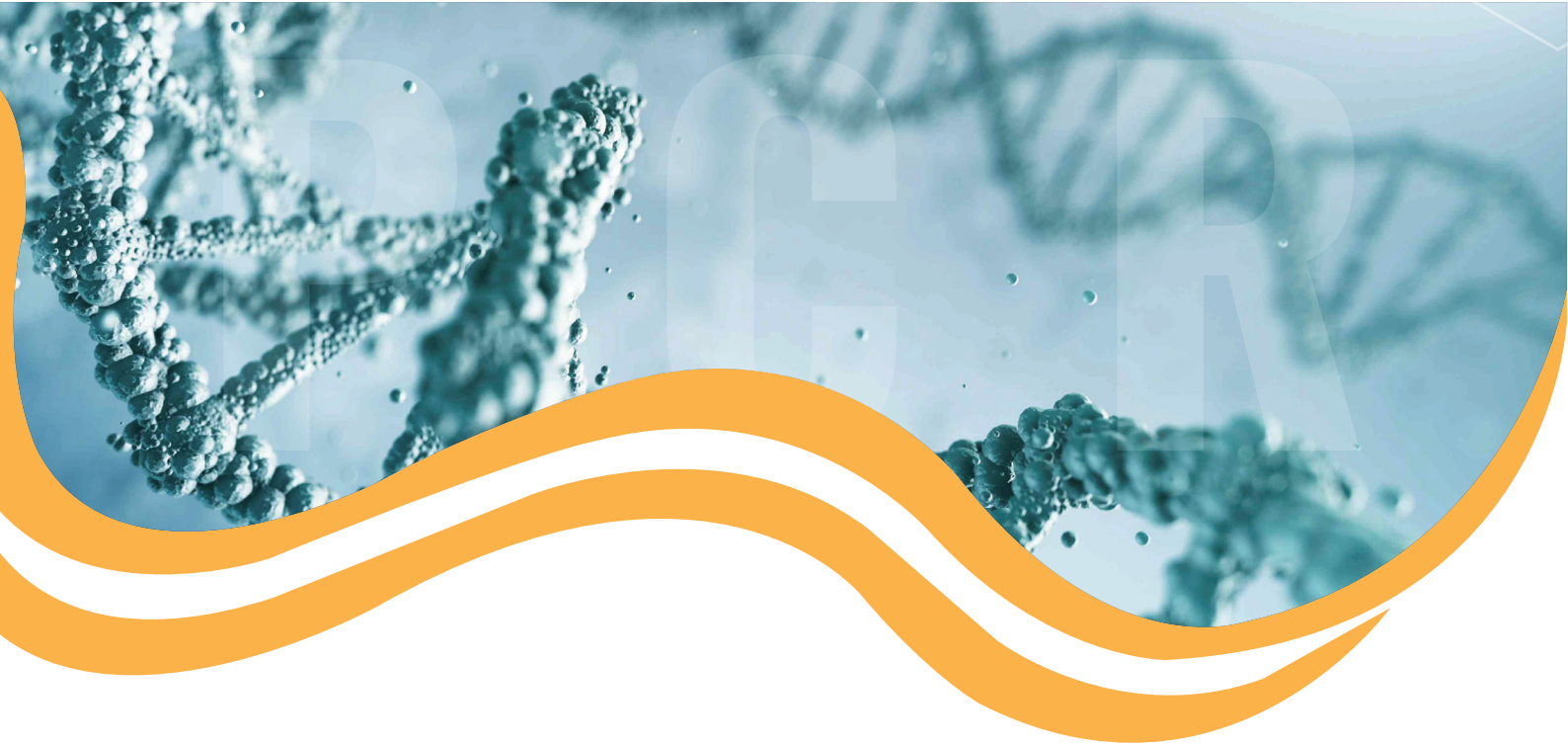


Buffers



Service

PCR



PCR

PCR (polymerase chain reaction) is an invaluable tool for molecular biology research. It is used in laboratories around the world in a wide array of applications such as cloning, gene expression analysis, genotyping, sequencing, and mutagenesis.

Everyday PCR Made Simple

Our REDiant 2X PCR Mastermix and exTEN 2X PCR Mastermix are formulated with density reagents and inert tracking dyes to enable easy visual control during PCR set-up and direct loading of the reaction product into the gel. Achieve robust amplification with minimal optimization of reaction conditions with an added convenience and minimal pipetting and handling errors.

Product	2X PCR Mastermix	REDiant 2X PCR Mastermix	exTEN 2X PCR Mastermix
Amplicon Size	5kb	5kb	5kb
End Product	Sticky ends	Sticky ends	Mix of Sticky & Blunt ends
Direct Loading to Gel	No	Yes, contains density reagent and red inert tracking dye which migrates at the same rate as 1kb DNA fragment in a 1% agarose gel	Yes, contains density reagent and two tracking dyes which migrates at the same rate as 4kb and 50bp DNA fragment in a 1% agarose gel
Product No	BIO-5180-200 (200rxn) BIO-5180-1000 (1000rxn)	BIO-5185-200 (200rxn) BIO-5185-1000 (1000rxn)	BIO-5186-200 (200rxn) BIO-5186-1000 (1000rxn)
Stand-alone Enzyme	BIO-5110-500U BIO-5110-2500U	BIO-5115-500U BIO-5115-2500U	

Ultra-pure Nucleotides

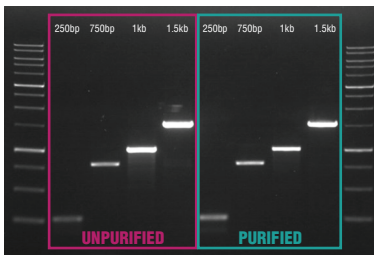
Highly quality dNTPs are a vital requirement for successful PCR. Get optimum performance with our high quality, ultra-pure dNTPs.

Isolate DNA with Confidence

Achieve maximum efficiency and performance with PrimeWay Extraction Kits.

High Yield

Ensures dependable data with excellent yield.



DNA yield of PCR product using 1st BASE PrimeWay Gel Extraction/Purification Kit.

Purity Consistency

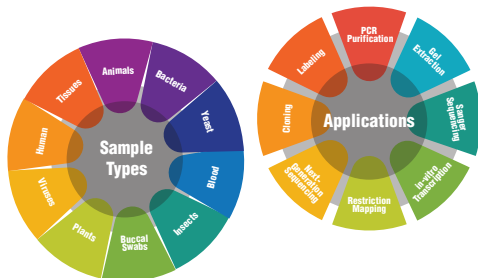
Purity ratio of DNA remains consistent within the acceptable range in multiple samplings.



DNA purity assessment from different sample matrices using 1st BASE PrimeWay Plasmid DNA Extraction Kit.

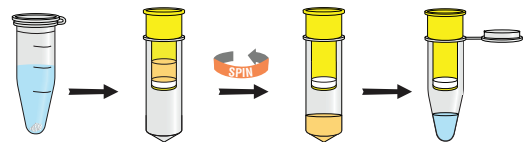
Versatility

Every PrimeWay extraction kit is able to accommodate to an extensive range of sample types and applications.



Convenience

Simple and straight-forward procedure that saves time and eliminates manual processing steps.



Easy-to-follow 1st BASE PrimeWay spin column purification method.

Find the Right Extraction Kits for Your Research Needs

PrimeWay Extraction Kits	Viral DNA/RNA	Genomic DNA	Plant DNA	Plasmid DNA	Gel Extraction/PCR Purification
Product No	KIT-9010-50	KIT-9020-50	KIT-9030-50	KIT-9040-50	KIT-9050-50
Size	50 preps	50 preps	50 preps	50 preps	50 preps
Sample Type	Serum Plasma Body Fluids Cell Culture Supernatant Viral Transport Medium Swabs	Tissue/ Mouse Tails Buccal Swabs Bacteria Cultured Cells Dried Blood Spots Yeast Insects Blood/ Buffy Coat	Various Types of Plants	Bacteria Culture	Gel/ PCR mixture
Yield/ Recovery	<1 µg	20 - 35 µg	1 - 30 µg	Up to 40 µg	Up to 95%
Purity	-	1.7 - 2.0	1.7 - 2.0	1.7 - 2.0	1.7 - 2.0
Duration	30 mins	20 mins	30 mins	25 mins	Gel Extraction: 20 mins PCR Purification: 10 mins

DNA Electrophoresis

Ensuing PCR, gel electrophoresis is commonly performed as an analytical procedure. Gel electrophoretic methods have also been used as a preparative technique before blotting, cloning, DNA sequencing, and other various downstream applications.



High Quality Agarose

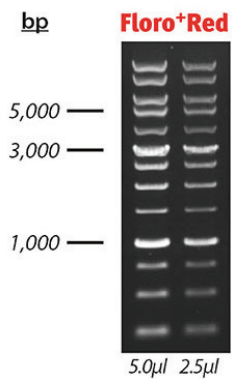
A low EEO agarose with high electrophoresis mobility well suited for nucleic acid and protein analytical, preparative electrophoresis and blotting.



Ready-to-use Running Buffers

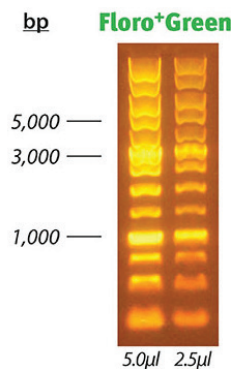
Choose from our range of TAE and TBE buffers available at different concentration. We also supply a comprehensive selection of various other buffer in convenient packaging and varying grade.

Light Up Your Gels with 1st BASE DNA Stains



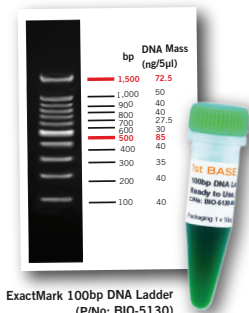
Product Series: BIO-5171

- ✓ **Excellent Sensitivity**
Achieve bright, clear and defined bands across different fragment sizes
- ✓ **Flexible Use**
 - Applicable to: dsDNA, ssDNA and RNA
 - Precast or post-gel staining protocols
 - Agarose and polyacrylamide gels
- ✓ **Safe For You**
Non-mutagenic and non-cytotoxic as shown by Ames and Cell Staining Tests
- ✓ **Easy Disposal**
Environmentally-friendly. Dispose as regular trash or down the drain**
Institutional regulations may vary.



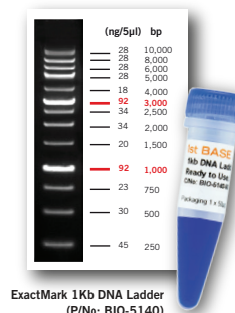
Product Series: BIO-5172

Mark Your Gels with 1st BASE ExactMark DNA Ladders



ExactMark 100bp DNA Ladder (P/No: BIO-5130)

- ✓ **Reliable & Precise**
- ✓ **Ready to Load**
- ✓ **Room Temp Stability (up to 6 months)**



ExactMark 1Kb DNA Ladder (P/No: BIO-5140)

Verify the Sequence

Be assured that your DNA template for Sanger sequencing is in good hands. We work hard to make sure we continuously meet or exceed leading industry providers in terms of quality value (QV), trace score and contiguous read length (CRL). Our experienced team ensures quality results even with difficult templates, and provide prompt troubleshooting assistance.



Custom Solutions & OEM Services

Besides our off-the-shelf PCR reagents supply, we offer customizable manufacturing solutions for clients developing molecular assays.

Quality Management

Assurance of our quality standards with our **ISO 13485: 2016** and **cGMP standards**.

Clean Room

1st BASE facility offers ISO clean room capabilities for customers who need their product parts processed in a clean, controlled environment. Operational capacity of more than 1300sqm and 4 separate ISO 7 cleanrooms of over 270sqm.

We have an experienced team in OEM product development, formulation, aseptic processing, kit assembly and packaging. Our proficiency in the handling of many product types brings you a complete turnkey solution for your custom kitting, packaging and labelling needs.

Contact Us Today!

