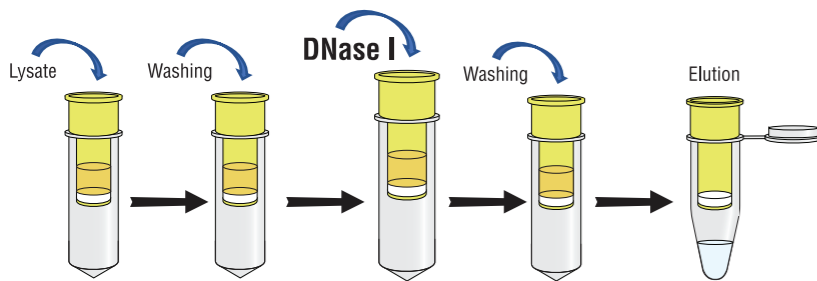


CONVENIENCE



Complete kit that includes On-Column DNase treatment



Find the Right Extraction Kits for your Research Needs,
Contact Us Today!



**Perform Your
Total RNA Extraction
With Confidence!**

1st BASE PrimeWay Total RNA Extraction Kit

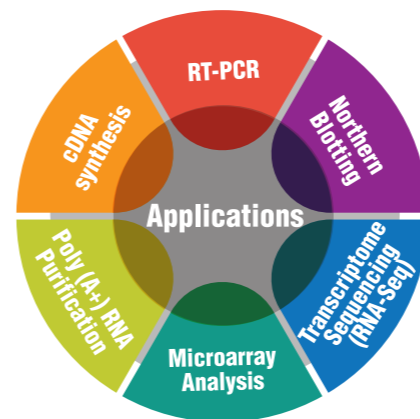
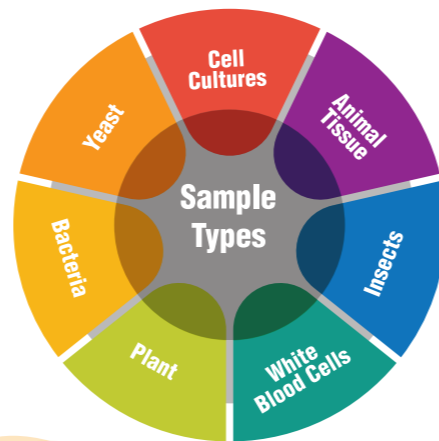
| | |
|---------------------------|--|
| Product Code | KIT-9021-10/50/250 |
| Sample Type | Bacteria, Yeast, Cell cultures, Animal tissue, Insects, White blood cells, Plant |
| Yield | Up to 70 µg |
| Purity (A260/A280) | 2.0 - 2.3 |
| Duration | <60 minutes |
| Packaging Size | 10, 50, 250 Preps |



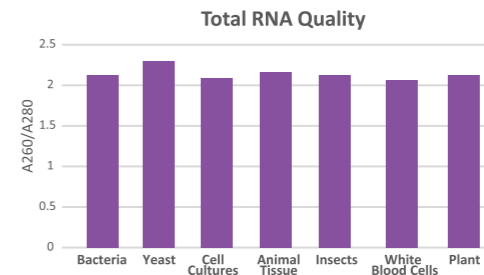
Scan QR Code for More Details

VERSATILITY

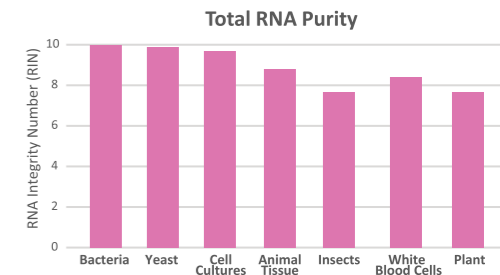
Suitable for a broad range of samples



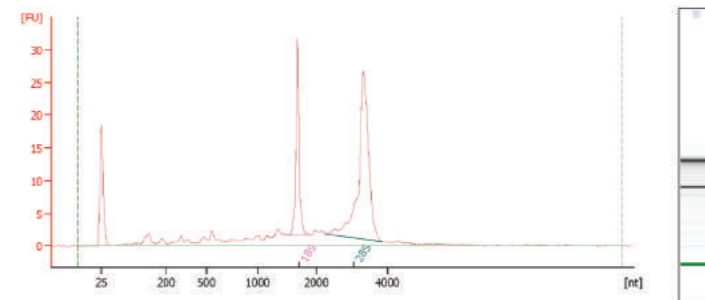
HIGH QUALITY & PURITY



Pure RNA with A260/A280 ratio between the range of 2.0 – 2.3



High RNA Integrity Number (RIN) with ≥ 7 that requires intact RNA for downstream applications



Mice spleen total RNA is isolated with PrimeWay Total RNA Extraction kit. The total RNA is analyzed using Agilent 2100 Bioanalyzer with RNA Nano LabChip®. It shows high RNA integrity as well as purity.