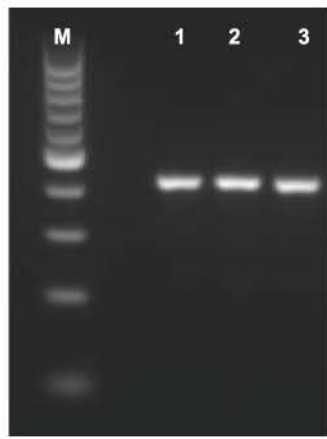


NEW

1st BASE Molecular Biology Reagents

PCR Reagents, DNA and Protein Ladders, DNA Loading Dye and DNA Stain



High Performance Reagents for Routine PCR

Product Information

Product No.	Product Description
BIO-5110-500U	Taq DNA Polymerase (recombinant), 500U Supplied with 10x Taq Buffer and 25mM MgCl ₂
BIO-5120-1ml	dNTP Mix, 10mM each, 1.0ml
BIO-5125-1ml	dNTP Set 100mM, 4 X 0.25ml

M – DNA size marker

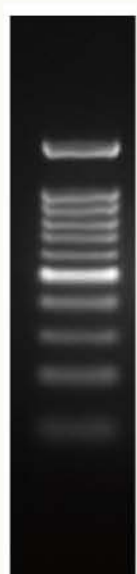
1 – Positive control

2 – Taq DNA Polymerase, recombinant (BIO-5110-500U) + dNTP Mix (BIO-5120-1ml)

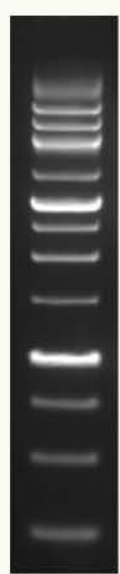
3 – Taq DNA Polymerase, recombinant (BIO-5110-500U) + dNTP Set (BIO-5125-1ml)

DNA fragments were obtained from a derivative of Promega pGEM vector in 50µl of PCR mixture containing 1.25U of Taq DNA Polymerase, recombinant (BIO-5140-100ug) with dNTP Mix and dNTP Set, 10mM for each nucleotide.

Products for DNA Electrophoresis



bp	DNA Mass (ng/5µl)
1,500	72.5
1,000	50
900	40
800	40
700	27.5
600	30
500	85
400	40
300	35
200	40
100	40



bp	DNA Mass (ng/5µl)
10,000	28
8,000	28
6,000	28
5,000	28
4,000	18
3,000	92
2,500	34
2,000	34
1,500	20
1,000	92
750	23
500	30
250	45

Product Information

Product No.	Product Description
BIO-5130-50ug	100bp DNA Ladder, Ready-To-Use, 50ug (for ~100 applications)
BIO-5130-100ug	100bp DNA Ladder, Ready-To-Use, 100ug (for ~200 applications)
BIO-5140-50ug	1kb DNA Ladder, Ready-To-Use, 50ug (for ~100 applications)
BIO-5140-100ug	1kb DNA Ladder, Ready-To-Use, 100ug (for ~200 applications)

100bp DNA Ladder (BIO-5130)

Gel running conditions:
1.7% Agarose gel (C/No: BIO-1000)
0.5µg/lane, 10cm gel, 1X TAE (C/No: BUF-3000/BUF-3001), 8V/cm, 2hrs

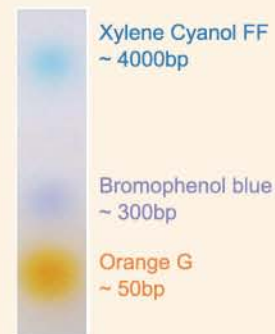
1kb DNA Ladder (BIO-5140)

Gel running conditions:
1% Agarose gel (C/No: BIO-1000)
0.5µg/lane, 10cm gel, 1X TAE (C/No: BUF-3000/BUF-3001), 8V/cm, 2.5hrs

6X DNA Loading Dye, 3-Colour

Contains 3 tracking dyes for better visual tracking of DNA migration during electrophoresis

Composition: 0.4% Orange G, 0.03% Bromophenol blue, 0.03% Xylene cyanol FF, 36% Glycerol, 10Mm Tris-HCl (pH 7.4), 50mM EDTA (pH 8.0)



DNA Stain

Safe non-EtBr high performance DNA Stain. DNA Stain has two secondary fluorescence excitation peaks (~270 nm; ~295 nm) and one strong excitation peak centered around 490 nm. The fluorescence emission is similar to Ethidium Bromide when bound to DNA which is at about 530 nm.

Precasting method: 3µl of DNA Stain (BIO-5160-6ml) was mixed with 100ml of 1.7% agarose gel solution before electrophoresis.

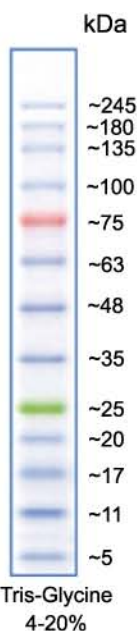
Gel running conditions:

1.7% Agarose gel (C/No: BIO-1000)

Mixture of DNA size marker and 6x DNA Loading Dye (BIO-5160-6ml) was loaded (0.5µg/lane) on 10cm gel, 1X TAE (C/No: BUF-3000/BUF-3001), 8V/cm, 2hrs. Bands were visualized under UV illuminator

Product Information

Product No.	Product Description	No. of Applications
BIO-5160-6ml	6X DNA Loading Dye, 3-Colour, 6 X 1ml	6,000 applications
BIO-5170-1ml	DNA Stain, 1ml	~200 applications (based on precasting protocol)



Prestained Protein Ladder

Broad range ladder with an orange reference band at ~75kDa and a green reference band at ~25kDa

Product Information

Product No.	Product Description	No. of Applications
BIO-5150-250ul	Prestained Protein Ladder, 3-Colour, 250ul	~50 applications
BIO-5150-500ul	Prestained Protein Ladder, 3-Colour, 500ul	~100 applications

Gel running conditions:

5µl of Prestained Protein Ladder (BIO-5150) loaded into 10-well mini-gel of 4-20% SDS-PAGE with Tris-glycine buffer.

For ordering and enquiries, please contact your local distributor