

Product Information

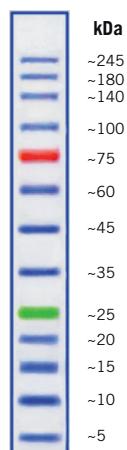
ExactPro Broad Range (5-245kDa) Prestained Protein Ladder, 250µl

C/No. BIO-5150-250ul
Packaging 1 X 250µl
Storage 25°C – 2 weeks
4°C – 3 months
-20°C – long term storage

1st BASE Pte Ltd
41 Science Park Road
#01-22/23 The Gemini
Singapore Science Park II
Singapore 117610
www.base-asia.com



Page 1 of 4



Tris-Glycine
4-20%

Quality Control

5µl of ExactPro Broad Range (5-245kDa) Prestained Protein Ladder provide 13 bands of equal intensities in 4 – 20% gradient SDS-PAGE (Tris-Glycine buffer) and after electrotransfer onto PVDF membrane.

Description

ExactPro Broad Range (5-245kDa) Prestained Protein Ladder contains 13 prestained recombinant proteins that cover a wide range of molecular weights from 3.5kDa – 245kDa. An orange reference band of ~75kDa and a green reference band of ~25kDa provides easy monitoring of protein separation.

The ladder is ready-to-use. No further dilution, addition of a reducing agent or heating is required.

Applications

Used in SDS-PAGE and Western blots for

Page 2 of 4

approximation of protein sizes, and also to locate a protein of interest for excision from an unstained preparative gel.

Storage Buffer

20mM Tris-H₃PO₄ (pH 7.5 @ 25°C)
15% (v/v) Glycerol
2% (w/v) SDS
10mM DTT
3.6mM Urea

Recommendations

- Thaw ladder at room temperature to dissolve precipitated solids.
Do not boil.
- Mix solution gently to ensure that it is homogeneous.
- Load ladder into SDS-PAGE gel or Western blot using these volumes (based on gel thickness of 0.75 – 1.0mm).
 - o 3µl per loading on 15-well mini-gel
 - o 5µl per loading on 10-well mini-gel
 - o 1.5 – 2.5µl per loading for general Western transferring
- Double the loading volume for thicker or larger gel.

Page 3 of 4

Remarks

- Each lot of ExactPro Broad Range (5-245kDa) Prestained Protein Ladder is calibrated with unstained protein ladder and calculated apparent molecular weights are as the picture.
- Prestained proteins can have different mobilities in various SDS-PAGE-buffer system. However, they are suitable for approximate molecular weight determination when calibrated against unstained standards in the same system.
- In 8% or 10% gels, low molecular weight proteins may migrate with the dye front.
- Suitable for use in Western blotting with all common membranes.
- Longer transfer times or higher transfer voltages may be required for Western blotting of proteins larger than 100kDa.

Page 4 of 4