

Product Information

ExactMark 100bp DNA Ladder (100-1,500 bp), Ready to Use, 50µg

C/No.	BIO-5130-50ug
Lot No.	-
Expiry Date	-
Concentration	0.1µg/µl
Packaging	1 X 50µg (100 applications)
Supplied with	-
Storage	25°C – 6 months -20°C – 24 months

Axil Scientific Pte Ltd
41 Science Park Road
#01-22/23 The Gemini
Singapore Science Park II
Singapore 117610



Page 1 of 4

Description

Used for sizing and approximate quantification of wide range double-stranded DNA on agarose gel. The ladder is composed of eleven individual DNA fragments (in base pairs): **1500**, 1000, 900, 800, 700, 600, **500**, 400, 300, 200 and 100. It contains two reference bands of 1500 and 500bp for easy orientation. Orange G and xylene cyanol FF are used as tracking dyes.

Storage Buffer

10mM Tris-HCl (pH 8.0)
1mM EDTA

Quality Control Assay Data

Well-defined bands are formed upon running of agarose gel electrophoresis. The DNA concentration is determined with spectrophotometry. The absence of nucleases is confirmed by a direct nuclease activity assay.

Page 2 of 4

Protocol for Loading

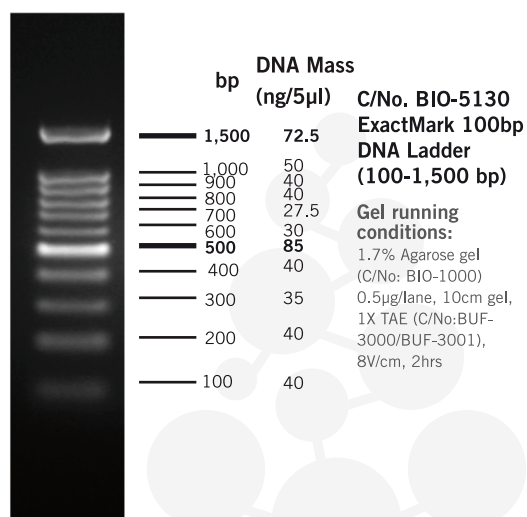
Load 5µl of the solution into a 5mm agarose gel lane.

It is recommended to load 1µl (0.1µg) of DNA ladder per 1mm of gel lane.

Recommendations

- Do not heat solution prior to loading.
- Mix 1 part of dye solution with 5 parts of DNA sample.
- Load equivalent amount of DNA sample and ladder.
- Adjust sample concentration to be approximately equal to the amount of DNA in the nearest band of the ladder for quantification purpose.
- Visualize DNA by staining with FloroSafe DNA stain (C/No: BIO-5170-1ml).

Page 3 of 4



Page 4 of 4