

# SNP GENOTYPING & MUTATION / VARIANT SCREENING

## ARE YOU..

Waiting for reagents?

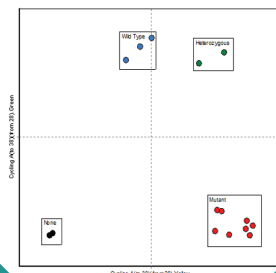
Having trouble with your standard curve?

Wait-listed for machines?

Rushing to use devices?

**NEW Services!**  
**JUST FOR YOU..**

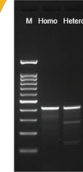
Figure 1. Scatter Analysis Graph



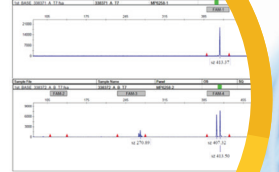
**rhAmp™ SNP Genotyping**

*A technique to uncover allelic variations based on SNPs within a genome.*

T7E1 assay results (IDT)



Homoduplex = 417  
Heteroduplex = 417, 411, 276, 135



**Mutation Screening by T7E1 Assay**

*The T7E1 mismatch cleavage assay is a cost-effective method for InDel detection induced by genome editing and is a good estimation of editing efficiency.*

**High Resolution Melting (HRM)**

*A PCR-based method to detect mutations, polymorphisms (e.g. InDels or SNPs) and epigenetic differences in dsDNA.*

Visit <http://base-asia.com/snp-genotyping-mutation-variant-screening> for more informations.

**Apical Scientific Sdn Bhd**

No. 7-1 to 7-4, Jalan SP 2/7, Taman Serdang Perdana, Seksyen 2, 43300 Seri Kembangan, Selangor, Malaysia.

☎ +603-8943-3252 📠 +603-8943-3243 ✉ mbs@apicalscientific.com

**Apical**  
Your Research is Our Business



Scan for our webpage!